

# Martinique Biological Resource Centre (CeRBiM)



## Collection catalogue

ENR-P1-CRB-005 Version 6  
Applicable: 30 December 2025



**IBiSA** • Infrastructures  
en Biologie  
Santé et  
Agronomie



For further information, please contact:  
[cerbim@chu-martinique.fr](mailto:cerbim@chu-martinique.fr)

☎ 0596 55 35 64

You can visit our website at: <https://www.chu-martinique.fr/recherche/>

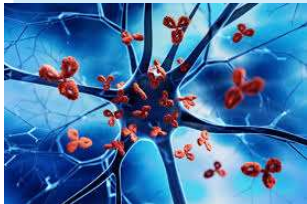
# Infectious and emerging diseases

Pathologies	Acronym for the collection	Promotion	Nature of samples
<b>ARBOVIROSES</b> Dengue, Zika and Chikungunya virus infections	<b>ARBHITA</b>	Internal	<ul style="list-style-type: none"> <li>❖ RNA, cryopreserved cells, plasma, capillary blood, whole blood, serum</li> <li>❖ Tears</li> <li>❖ Saliva, Pharyngeal secretions</li> <li>❖ Stool, Urine</li> </ul>
	<b>CARBO</b>	internal	<ul style="list-style-type: none"> <li>❖ Cryopreserved cells, Dry sediments, Plasma, Serum</li> <li>❖ Urine</li> </ul>
	<b>DENGUE-SEA</b>	internal	<ul style="list-style-type: none"> <li>❖ Serum</li> </ul>
<b>HTLV-1 infections</b>	<b>ATLL-HR01</b>	internal	<ul style="list-style-type: none"> <li>❖ Lymphocyte RNA, Cryopreserved cells, Lymphocyte pellets, Serum</li> </ul>
	<b>HAMIL28B</b>	internal	<ul style="list-style-type: none"> <li>❖ DNA, Plasma, Lymphocyte pellets</li> </ul>
<b>Papillomavirus and HIV co-infection</b>	<b>HP2V-AG</b>	internal	<ul style="list-style-type: none"> <li>❖ Nucleic acids, lymphocyte pellets</li> <li>❖ Cervical-vaginal samples</li> </ul>
<b>Leptospira infection</b>	<b>LEPTO</b>	internal	<ul style="list-style-type: none"> <li>❖ Whole blood</li> </ul>

# Autoimmune and inflammatory diseases

Pathologies	Collection name	Promotion	Nature of samples
<b>Acute Devic's neuromyelitis optica (NOMAD)</b>	<b>CARNOMAD</b>	Internal	❖ DNA, lymphocyte pellets, plasma (plasmapheresis), serum ❖ CSF pellets, CSF supernatant
	<b>TYSABRI</b>	internal	❖ DNA, RNA, Lymphocyte pellets, Serum
<b>Multiple sclerosis, Optic neuromyelitis</b>	<b>NEURO-CHUM</b>	internal	❖ Whole blood pools ❖ BFC ❖ Plasma (plasmapheresis) ❖ Serum, Plasma ❖ CSF sediment, CSF supernatant
<b>Rheumatoid arthritis</b>	<b>ACPPPA</b>	Internal	❖ DNA, Plasma, Blood ❖ Urine
<b>Rheumatoid arthritis</b>	<b>LUNEK</b>	Internal	
<b>Membrane expression of STIM1 in autoimmune diseases</b>	<b>STIMEX</b>	<a href="#">external</a> Brest University Hospital	❖ Heparinised plasma ❖ Cryopreserved cells
<b>Treatment of lupus nephritis</b>	<b>OBILUP</b>	<a href="#">external</a> APHP Paris	❖ Whole blood ❖ BFC ❖ Plasma ❖ Serum ❖ Urine ❖ Cryopreserved cells

# Autoimmune and inflammatory diseases

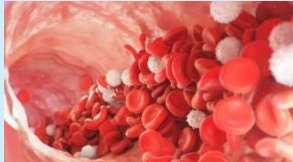
Theme	Collection name	Promotion	Nature of samples
 <b>Multiple sclerosis</b>	<b>OFSEP-HD</b>	<p>External OFSEP French Multiple Sclerosis Observatory</p> <p>High-definition (HD) ancillary cohort of patients with multiple sclerosis (MS) enabling more comprehensive collection of potential determinants of observed and interventional characteristics of the disease, in order to determine prognostic factors for disease progression in real life</p>	❖ SST II serum
	<b>OFSEP-BIO</b>	<p>external OFSEP</p> <p>Collection, for scientific purposes, of biological samples (and their derivatives) taken from a group of individuals identified and selected on the basis of the clinical or biological characteristics of one or more members of the group</p>	<ul style="list-style-type: none"> <li>❖ Whole blood pools</li> <li>❖ Cryopreserved cells</li> <li>❖ Plasma</li> <li>❖ Serum</li> <li>❖ CSF pellets</li> <li>❖ Saliva</li> </ul>
<b>Envenomations</b>	<b>W BOTHROPS</b>	<p>internal</p> <p>Compare the plasma activity of von Willebrand factor, upon admission to hospital, in patients suffering from envenomation due to Bothrops bites, according to their endemic origin in French Guiana or Martinique.</p>	<ul style="list-style-type: none"> <li>❖ Plasma</li> <li>❖ Serum</li> </ul>

# Cardio-metabolic diseases

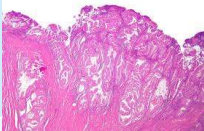

Topics	Acronym of the collection	Promotion	Nature of samples
Cardiac Amyloidosis TEAM	TEAM Red Flags	Internal	❖ DNA, Whole blood, BFC ❖ Plasma
	TEAM HF	Internal	❖ BFC, DNA, ❖ Plasma
Bariatric surgery	BARIAMITRI	Internal	❖ Plasma ❖ Perigastric fatty tissue
Cardiac amyloidosis	□ ACT- EARLY	External EIDOS THERAPEUTICS	❖ Tissue ❖ Blood, serum, plasma ❖ urine






# Genetic diseases

Themes	Collection name	Promotion	Nature of samples
<b>Haemostasis abnormalities</b>  	Haemophilia and other internal bleeding disorders	internal <b>Private collections</b>	❖ DNA, Plasma, Blood ❖ Urine
	Von Willebrand disease	Collection managers: CRC-MHC Resource and Competence Centre Constitutional Haemorrhagic Diseases	❖ DNA, Plasma, Whole Blood

## Cross-cutting themes

Themes	Acronym or name of the collection	Promotion	Nature of samples
<b>Endometrial cancer</b> 	<b>ENDO-NGS</b>	Internal	<ul style="list-style-type: none"> <li>❖ Platelet-rich plasma (PRP), Cell pellet</li> <li>❖ Tissue</li> </ul>
<b>Cancer and COVID-19</b>	<b>RESILIENCE</b>	Internal	<ul style="list-style-type: none"> <li>❖ Serum</li> </ul>
<b>Sudden Infant Death Syndrome</b> <p>Generate and update prevention messages for the general public and healthcare professionals, improve care for families and deceased children, and advance scientific research</p> 	<b>BIOMIN</b>	<p><b>external</b> OMIN National Observatory of Unexpected Infant Deaths Nantes University Hospital</p>	<ul style="list-style-type: none"> <li>❖ Blood, PAXgene blood</li> <li>❖ Guthrie card</li> <li>❖ Serum, CSF</li> <li>❖ Urine, stool</li> <li>❖ Respiratory samples</li> <li>❖ Hair</li> <li>❖ Plasma,</li> <li>❖ Cryopreserved cells</li> </ul>

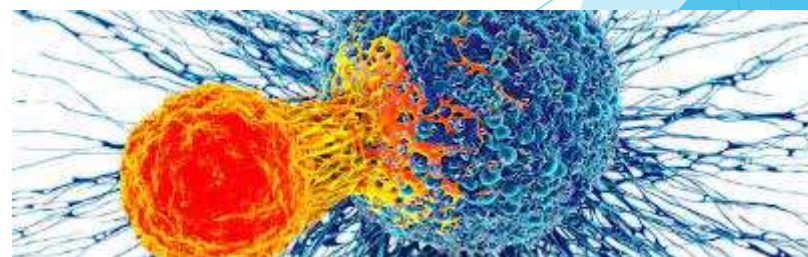
## Cross-cutting themes: Environmental pathologies

Themes	Acronym or name of the collection	Promotion	Nature of samples
<b>Environmental</b>  To estimate the risk of developing renal complications from lupus based on the level of chlordécone exposure in active lupus patients at the Martinique University Hospital. 	LUNEK	Internal	<ul style="list-style-type: none"> <li>❖ Cryopreserved cells</li> <li>❖ Serum</li> </ul>
  Link between exposure to chlordécone and prostate cancer in Martinique 	CHLOECAPA	External INSERM	<ul style="list-style-type: none"> <li>❖ Plasma</li> <li>❖ BFC</li> <li>❖ Serum</li> </ul>



## Cross-cutting themes: **Oncology**

Themes		Nature of samples
<b>Perinatal care (foetopathology)</b>	CeRBiM	❖ Tissue, DNA
<b>Haematology</b>	CeRBiM	❖ Tumour tissue
<b>Digestive tumours</b>	CeRBiM	❖ Healthy and tumour tissue
<b>Urology/gynaecology</b>	CeRBiM	❖ Healthy and Tumour Tissue
<b>Neurosurgery / ENT</b>	CeRBiM	❖ Healthy and tumour tissue
<b>Cardiovascular and thoracic</b>	CeRBiM	❖ Healthy and tumour tissue
<b>Paediatric pathologies</b>	CeRBiM	❖ Healthy and tumour tissue
<b>Dermatology</b>	CeRBiM	❖ Healthy and tumour tissue



# Tumour bank - Remnants from treatment

The health mission of tumour banks is part of the authorisation system for healthcare establishments for the treatment of cancer.


	Objectives	Nature
<b>ANAPATH</b>	<p>Preserve biological samples as part of a patient's medical record, ensuring that doctors can refer back to these biological archives in order to refine a diagnosis or therapeutic approach.</p> <p>Cryopreservation must be guaranteed in cases where it is a prerequisite for performing molecular tests that improve the diagnostic and therapeutic management of patients.</p>	❖ Healthy and tumour tissue





## CeRBiM - Remnants from healthcare

Monitoring the exposure of the Martinique population to chlordecone

	Objectives	nature
<b>Chlordecone</b>  Chlordecone :	To establish a serum bank of biological samples from patients exposed to chlordecone.	❖ Serum (currently being established)

They placed their trust in

## Academic research

### ▶ ARS Martinique

- KANNARI1 and KANNARI2

### ▶ CHU

- APHP Marseille: MATISSE
- APHP Paris: TEMO-CARB
- Nantes: POLYCOR

### ▶ Private establishments

- FOCH Hospital: ANDROCAN

### ▶ INSERM

- MADIPROSTATE
- SAPOTILLE
- FRENCH COVID-19 / FRENCH COVID 2021
- EPICOV / EPICOV4
- COCOPREV
- SY DOXY
- ZIKA-DFA-FE

## healthcare

## University research

### ▶ University of the West Indies Doctoral schools

- Thesis by Laurie-Anne ROSAMONT (Neurology)
- Thesis by Marie-Daniéla DUBOIS (Haematology)

## Industrial research

### ▶ ADD MEDICA

- SIKAMIC

### ▶ MSD

- MOVE-AHEAD

### ▶ Theradis Pharma

- DISCOVERY-2

### ▶ Vaccine Research Centre

- VRC 704

### ▶ Vertex Pharmaceuticals Incorporated

- VERTEX VX19 NEN 801
- VERTEX VX21-147-301

# Publications from the last ten years



- **2016 Epidemiology of aquaporin-4 autoimmunity and neuromyelitis optica spectrum**, Flanagan et al, *Annals of Neurology*
- **2017 Guillain-Barre Syndrome Associated With Zika Virus Infection in Martinique in 2016: A Prospective Study**, Benoît Rozé et al., *Clinical Infectious Diseases*
- **2018 Preamble to the thesis Genetic Study of Haemophilia A in Martinique**, DUBOIS Marie-Daniéla CRC MHC, *University Thesis*
- **2018 Zika virus infects human testicular tissue and germ cells**, Giulia Matusali et al., *Journal of Clinical Investigation*
- **2020 Methods common to the four parts of the KANNARI study on health, nutrition and exposure to chlordecone in the French West Indies 2011-2018**, *Santé Publique France*
- **2020 Prevalence of chronic chikungunya and associated risk factors in the French West Indies (Martinique): A prospective cohort**, Bertolotti et al, *PLoS Neglected Tropical Diseases*
- **2020 Zika Virus infection promotes local inflammation, cell adhesion molecule upregulation, and leukocyte recruitment at the blood-brain barrier**, Marion Clé et al., *Host-Microbe Biology*
- **2021 Remdesivir plus standard of care versus standard of care alone for the treatment of patients admitted to hospital with COVID-19 (DisCoVeRy): a phase 3, randomised, controlled, open-label trial**, Florence Ader et al., *The Lancet*
- **2021 Nasopharyngeal and serological anti SARS-CoV-2 IgG/IgA responses in COVID-19 patients**. Crescenzo-Chaigne B et al., *Journal of Clinical Virology plus*



# Publications from the last ten years

- **2022 Outcome of very high-risk patients treated by Sotrovimab for mild to moderate COVID-19 Omicron, a prospective cohort study** (the ANRS 0003S COCOPREV study). G.Martin-Blondel et al., *J Infect*
- **2022 Sotrovimab to prevent severe COVID-19 in high-risk patients infected with Omicron BA.2.** G. Martin-Blondel et al., *J Infect*
- **2022 Remdesivir for the treatment of hospitalised patients with COVID-19: final results from the DisCoVeRy randomised, controlled, open-label trial.** Ader et al., *MedRxiv*
- **2022 Remdesivir plus standard of care versus standard of care alone for the treatment of patients admitted to hospital with COVID-19 (DisCoVeRy): a phase 3, randomised, controlled, open-label trial.** Ader F, et al.; DisCoVeRy Study Group. *Lancet Infect Dis.* 2022 Feb;22(2):209-221.
- **2022 Final results of the DisCoVeRy trial of remdesivir for patients admitted to hospital with COVID-19.** Ader F, Bouscambert-Duchamp M, Hites M, Peiffer-Smadja N, Mentré F, Burdet C; DisCoVeRy Study Group. *Lancet Infect Dis.*
- **2022 Trends in social exposure to SARS-Cov-2 in France. Evidence from the national socioepidemiological cohort–EPICOV.** Josiane Warszawski et al., Epicov Team. *PlosOne*
- **2022 EPICOV presentation at the 3-CR conference** (Slide acknowledging CeRBIM)
- **2023 Antiviral activities of sotrovimab against BQ.1.1 and XBB.1.5 in sera of treated patients.** T. Bruel et al., DisCoVeRy Study Group. *MedRxiv*
- **2023 The biological sample collection of the OFSEP French MS registry: An essential tool dedicated to researchers.** Brocard G et al.,. *Mult Scler Relat Disord.*



# Publications from the last ten years

- ▶ **2023 Sotrovimab therapy elicits antiviral activities against Omicron BQ.1.1 and XBB.5 in sera of immunocompromised patients.** T. Bruel et al., *Med*
- **2024 Spike Protein Genetic Evolution in Patients at High Risk of Severe Coronavirus Disease 2019 Treated by Monoclonal Antibodies.** Leducq V et al., COCOPREV Study Group. *J Infect Dis.* 2024
- **2024 Copy number signatures and CCNE1 amplification reveal the involvement of replication stress in high-grade endometrial tumours oncogenesis.** Marlin R, Loger JS, Joachim C, Ebring C, Robert-Siegwald G, Pennont S, Rose M, Raguette K, Suez-Panama V, Ulric-Gervaise S, Lusbec S, Bera O, Vallard A, Aline-Fardin A, Colomba E, Jean-Laurent M. *Cell Oncol.*
- **2024 Spike Protein Genetic Evolution in Patients at High Risk of Severe Coronavirus Disease 2019 Treated by Monoclonal Antibodies.** V. Leducq et al., *J Infect Dis*
- **2024 The French registry of sudden unexpected death in infancy (SUDI): a 7-year review of available data.** Ducloyer M et al., OMIN Study Group. *Eur J Pediatr.*
- **2025 MOG antibody-associated disease epidemiology in Olmsted County, USA, and Martinique.** Cacciaguerra L, Sechi E, Komla-Soukha I, Chen JJ, Smith CY, Jenkins SM, Guo K, Redenbaugh V, Fryer JP, Tillemma JM, Vorasoot N, Tisavipat N, Thakolwiboon S, Dubey D, Zekeridou A, McKeon A, Tobin WO, Kantarci OH, Keegan BM, Tajfirouz DA, Chodnicki KD, Mandrekar J, Lucchinetti CF, Lopez-Chiriboga SA, Nathoo N, Joseph NK, Devine MF, Sagen JA, Pittock SJ, Cabre P, Flanagan EP. *J Neurol.*
- **2025 Oral presentation: Management of Sudden Infant Death Syndrome in Overseas Territories,** *MIN Congress*