

# Martinique Biological Resource Centre (CeRBiM)



## Catalogue of collections

ENR-P1-CRB-005 Version 5  
Applicable: 2024-09-05



For further information:  
[cerbim@chu-martinique.fr](mailto:cerbim@chu-martinique.fr)

☎ 0596 55 35 64

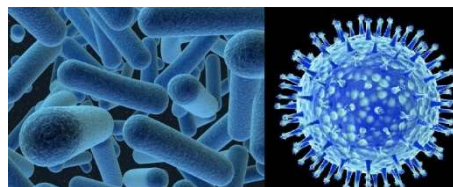
You can visit our website at the following address:  
<https://www.chu-martinique.fr/recherche/>

# Infectious and emerging diseases

Collection theme	Collection acronym	Promotion	Type of samples
<b>ARBOVIROSES</b> Dengue, Zika and Chikungunya virus infections	<b>ARBHITA</b>	internal	❖ RNA, Cryopreserved cells, Plasma, Capillary blood, Whole blood, Serum ❖ Tears ❖ Saliva, Pharyngeal secretions ❖ Stool, Urine
	<b>CARBO</b>	internal	❖ Cryopreserved cells, Dried cells, Plasma, Serum ❖ Urine
	<b>DENGUE-SEA</b>	internal	❖ Serum
<b>HTLV-1 infections</b>	<b>ATLL-HR01</b>	internal	❖ Lymphocyte RNA, Cryopreserved cells, Lymphocyte pellets, Serum
	<b>HAMIL28B</b>	internal	❖ DNA, Plasma, Lymphocyte cells
<b>Papillomavirus and HIV co-infection</b>	<b>HP2V-AG</b>	internal	❖ Nucleic acids, Lymphocyte cells ❖ Cervico-vaginal swabs
<b>Leptospiral infection</b>	<b>LEPTO</b>	internal	❖ Whole blood
	<b>LEPTO3</b>	internal	❖ EDTA plasma

# Infectious and emerging diseases

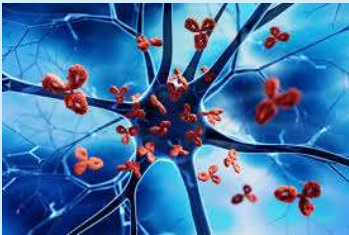
Collection theme	Collection acronym	Promotion	Type of samples
<b>COVID</b>	<b>DISCOVERY / FRENCH COVID 19</b> Multicentre, randomised, adaptive study of the efficacy and safety of treatments for adult patients hospitalised with COVID-19 infection.	external INSERM	<ul style="list-style-type: none"><li>❖ Plasma, Serum, Blood</li><li>❖ BFC</li><li>❖ Lymphocyte clots</li><li>❖ Respiratory samples</li><li>❖ Urine</li></ul>
<b>SY-DOXY</b>	Randomised non-inferiority clinical trial of doxycycline versus BPG in the treatment of early syphilis	external INSERM	<ul style="list-style-type: none"><li>❖ Mucocutaneous sampling</li></ul>



# Autoimmune and inflammatory diseases

Themes	Name of the collection	Promotion	Type of samples
<b>Devic's Neuromyelitis Optica Acute (NOMAD)</b>	<b>CARNOMAD</b>	internal	❖ DNA, Lymphocyte pellets, Plasma (plasmapheresis), Serum ❖ CSF caps, CSF supernatant
	<b>TYSABRI</b>	internal	❖ DNA, RNA, Lymphocyte cells, Serum
<b>Multiple sclerosis, Neuromyelitis optica</b>	<b>NEURO-CHUM</b>	internal	❖ Whole blood units ❖ BFC ❖ Plasma (plasmapheresis) ❖ Serum, Plasma ❖ CSF caps, CSF supernatant
<b>Rheumatoid arthritis</b>	<b>ACPPPA</b>	internal	❖ DNA, Plasma, Blood ❖ Urine
<b>Membrane expression of STIM1 in autoimmune diseases</b>	<b>STIMEX</b>	external Brest University Hospital	❖ Heparinised plasma ❖ Cultured cells
<b>Treatment of lupus nephropathy</b>	<b>OBILUP</b>	external APHP Paris	❖ Whole blood ❖ BFC ❖ EDTA plasma ❖ Serum ❖ Urine ❖ Cultured cells

# Autoimmune and inflammatory diseases

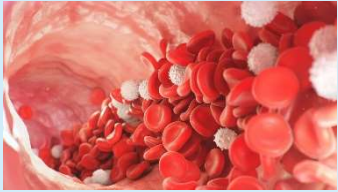
Themes	Name of the collection	Promotion	Type of samples
<b>Multiple sclerosis</b>  	<b>OFSEP-HD</b>	<p><a href="#">external</a> promoted by OFSEP (French Multiple Sclerosis Observatory)</p> <p>A high-definition (HD) ancillary cohort of patients with multiple sclerosis (MS) to gather more comprehensive data on potential determinants of observed and interventional characteristics of the disease, in order to determine prognostic factors for the course of the disease in real life.</p>	❖ SST II serum
	<b>OFSEP-BIO</b>	<p><a href="#">external</a> promoted by OFSEP (French Multiple Sclerosis Observatory)</p> <p>Gathering, for scientific purposes, of biological samples taken from a group of persons identified and selected on the basis of the clinical or biological characteristics of one or more members of the group, as well as derivatives of these samples (in the context of the OFSEP).</p>	<ul style="list-style-type: none"> <li>❖ Whole blood units</li> <li>❖ Cultured cells</li> <li>❖ EDTA plasma</li> <li>❖ Serum</li> <li>❖ LCR caps</li> <li>❖ Saliva</li> </ul>
<b>Envenomations</b>	<b>W BOTHROPS</b>	To compare the plasma Willebrand factor activity, on admission to the hospital ward (D0), of patients envenomed by Bothrops bites according to their endemic origin in French Guiana or Martinique.	<ul style="list-style-type: none"> <li>❖ Plasma</li> <li>❖ Serum</li> </ul>

# Cardiometabolic diseases

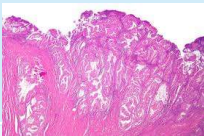


Themes	Collection acronym	Promotion	Type of samples
<b>TEAM Cardiac Amyloidosis</b>	<b>TEAM Red Flags</b>	internal	❖ DNA, Whole blood, BFC ❖ Plasma
	<b>TEAM HF</b>	internal	❖ BFC, DNA, ❖ Plasma
<b>AVC</b>	<b>MATISSE</b> The value of molecular analysis of cerebral thrombi in determining the prognosis and aetiology of cerebral infarction	<b>external</b> Assistance Publique-Hôpitaux de Marseille	❖ Thrombus ❖ Blood
<b>Bariatric surgery</b>	<b>BARIAMITRI</b>	internal	❖ EDTA plasma ❖ Perigastric fatty tissue



# Genetic diseases

Themes	Name of the collection	Promotion	Type of samples
<b>Haemostasis abnormalities</b>  	Haemophilia and other deficiencies	internal <b>Private collections</b>	❖ DNA, Plasma, Blood ❖ Urine
	Von Willebrand disease	Collection managers : CRC-MHC Resource and Skills Centre Constitutional Haemorrhagic Diseases	❖ DNA, Plasma, Whole blood


## Cross-cutting themes

Themes	Acronym or name of the collection	Promotion	Type of samples
<b>Endometrial cancer</b> 	<b>ENDO-NGS</b>	internal	<ul style="list-style-type: none"> <li>❖ DNA, Buffy coat, Cell pellet, Plasma</li> <li>❖ <b>Fabric</b></li> </ul>
<b>Cancer and COVID 19</b>	<b>CANCELLATION</b>	internal	<ul style="list-style-type: none"> <li>❖ Serum</li> </ul>
<b>Unexpected Infant Death Syndrome</b> Generate and update prevention messages for the general public and healthcare professionals, improve care for families and children who have died, and advance scientific research.	 <b>BIOMIN</b>	<b>external</b> <b>OMIN</b> (National Observatory of Unexpected <b>Infant</b> Deaths - Nantes University Hospital)	<ul style="list-style-type: none"> <li>❖ Blood, blood PAXgene</li> <li>❖ Guthrie cardboard</li> <li>❖ Serum, CSF</li> <li>❖ Urine, faeces</li> <li>❖ Respiratory samples</li> <li>❖ Hair</li> <li>❖ Plasma, Cultured cells</li> </ul>
<b>Environmental</b> Study of the impregnation of the Martinique and Guadeloupe populations by the chlordécone molecule and other environmental pollutants of interest	 <b>KANNARI 2</b>	<b>external</b> Santé Publique France	<ul style="list-style-type: none"> <li>❖ Blood</li> <li>❖ Serum</li> <li>❖ Urine</li> </ul>



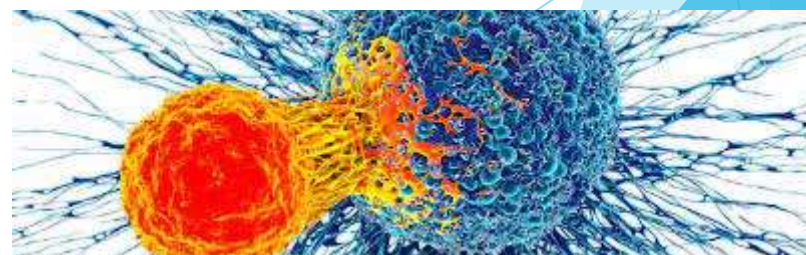


## Cross-cutting themes

Themes	Acronym or name of the collection	Promotion	Type of samples
<p>☐ <b>Environnementale</b></p> <p>To estimate the risk of developing a renal complication of lupus disease as a function of the level of Chlordécone impregnation in the active file of lupus patients at Martinique University Hospital.</p> 	<p><b>Systemic lupus erythematosus and Chlordécone impregnation in Martinique</b></p> <p><b>(LUNEK)</b></p>	<p>internal</p>	<ul style="list-style-type: none"> <li>❖ Cell ampoules</li> <li>❖ Serum</li> </ul>

## Cross-cutting themes: **Cancerology**

Themes		Type of samples
<b>Perinatality (Foetopathology)</b>	CeRBIM	❖ Tissue, DNA
<b>Haematology</b>	CeRBIM	❖ Tumour tissue
<b>Digestive tumours</b>	CeRBIM	❖ Healthy and tumour tissue
<b>Urology / Gynaecology</b>	CeRBIM	❖ Healthy and tumour tissue
<b>Neurosurgery / ENT</b>	CeRBIM	❖ Healthy and tumour tissue
<b>Cardiovascular and thoracic</b>	CeRBIM	❖ Healthy and tumour tissue
<b>Paediatric pathologies</b>	CeRBIM	❖ Healthy and tumour tissue
<b>Dermatology</b>	CeRBIM	❖ Healthy and tumour tissue



# Tumour bank left over from treatment

The health mission of tumour banks is part of the authorisation system for health establishments treating cancer.

	Objectives	nature
<b>ANAPATH</b>	<p>Preserve biological samples as part of a patient's medical file, guaranteeing doctors the possibility of going back over these biological archives in order to clarify a diagnosis or therapeutic orientation.</p> <p>Cryopreservation must be guaranteed if it proves to be a prerequisite for carrying out molecular tests to improve the diagnostic and therapeutic management of patients.</p>	<p>❖ Healthy and tumour tissue</p>



# They have placed their trust in us....

## Academic research

### ▶ **ARS Martinique**

- KANNARI1

### ▶ **CHU**

- Nantes : POLYCOR

- APHP Paris: TEMO-CARB

- TERMINATION

### ▶ **INSERM**

- MADIPROSTATE

- SAPOTILLE

- FRENCH COVID-19 / FRENCH COVID 2021

- EPICOV / EPICOV4

- COCOPREV

- ZIKA-DFA-FE

### ▶ **Université des Antilles Doctoral schools**

- Thesis Laurie-Anne ROSAMONT (Neurology)

- Thesis Marie-Daniéla DUBOIS (Haematology)

## Industrial research

### ▶ **ADD MEDICA**

- SIKAMIC

### ▶ **MSD**

- MOVE-AHEAD

### ▶ **Theradis Pharma**

- DISCOVERY-2

### ▶ **Vaccine Research Center**

- VRC 704

### ▶ **Vertex pharmaceuticals incorporated**

- VERTEX VX19 NEN 801

- VERTEX VX21-147-301



# Publications in the last ten years

- **2014** *Infectious and tropical diseases in the Caribbean*
- **2014** *Journées Nationales Infectiologie*, André CABIE
- **2016** Epidemiology of aquaporin-4 autoimmunity and neuromyelitis optica spectrum, Flanagan et al, *Annals of Neurology*
- **2017** Guillain-Barre Syndrome Associated With Zika Virus Infection in Martinique in 2016: A Prospective Study, Benoît Rozé et al, *Clinical Infectious Diseases*
- **2018** Preamble to the dissertation Etude Génétique de l'Hémophilie A en Martinique, DUBOIS Marie-Daniéla CRC MHC
- **2018** Zika virus infects human testicular tissue and germ cells, Giulia Matusali et al, *Journal of Clinical Investigation*
- **2020** Common core methods for the four components of the KANNARI study on health, nutrition and exposure to chlordecone in the French West Indies 2011-2018, *Santé Publique France*
- **2020** Prevalence of chronic chikungunya and associated risks factors in the French West Indies (La Martinique): A prospective cohort, Bertolotti et al, *PLoS Neglected Tropical Diseases*
- **2020** Zika Virus infection promotes local inflammation, cell adhesion molecule upregulation, and leukocyte recruitment at the blood-brain barrier, Marion Clé et al, *Host-Microbe Biology*
- **2021** Remdesivir plus standard of care versus standard of care alone for the treatment of patients admitted to hospital with COVID-19 (DisCoVeRy): a phase 3, randomised, controlled, open-label trial, Florence Ader et al, *The Lancet*
- **2021** Nasopharyngeal and serological anti SARS-CoV-2 IgG/IgA responses in COVID-19 patients. Crescenzo-Chaigne B et al, *Journal of Clinical Virology* more
- **2022 04**: Outcome of very high-risk patients treated by Sotrovimab for mild to moderate COVID-19 Omicron, a prospective cohort study (the ANRS 0003S COCOPREV study) - G.Martin-Blondel & al
- **2022 07**: Sotrovimab to prevent severe COVID-19 in high risk patients infected with Omicron BA.2. G.Martin-Blondel & al
- **2022** Remdesivir for the treatment of hospitalised patients with COVID-19: final results from the DisCoVeRy randomised, controlled, open-label trial. Ader et al, *MedRxiv*
- **2022** Trends in social exposure to SARS-Cov-2 in France. Evidence from the national socioepidemiological cohort-EPICOV. Josiane Warszawski ...Epicov Team. *PlosOne*
- **2022** EPICOV presentation at the 3-CR days (slide thanking CeRBIM)
- **2022** Poster at JN1 2022 Outcome of very high risk patients treated by sotrovimab for mild to moderate COVID 19 VOC Omicron in the ANRS 0003S CoCoPrev cohort and poster at ECCMID 2022 Outcome of very high risk patients treated by sotrovimab for mild to moderate COVID 19 VOC Omicron, a prospective cohort study (the ANRS 0003S CoCoPrev study)
- **2023 05**: Antiviral activities of sotrovimab against BQ.1.1 and XBB.1.5 in sera of treated patients. T.Bruel & al
- **2023 09**: OFSEP-HD The-biological-sample-collection-of-the-OFSEP-French\_2023\_Multiple-Sclerosis
- **2023 10**: Sotrovimab therapy elicits antiviral activities against Omicron BQ.1.1 and and XBB,X,5 in sera of immunocompromised patients. T.Bruel & al
- **2024 04** : ENDO-NGS; Copy number signatures and CCNE1 amplification reveal the involvement of replication stress in high-grade endometrial tumors oncogenesis (Cellular Oncology)
- **2024 05**: Spike Protein Genetic Evolution in Patients at High Risk of Severe Coronavirus Disease 2019 Treated by Monoclonal Antibodies, V.Leducq & al
- **2024 07**: Epidemiology of Myelin Oligodendrocyte Glycoprotein Antibody-associated Disease in Two Populations of Divergent Racial and Ethnical background, *submitted*.