

# Biological Resource Center of Martinique (CeRBIM)



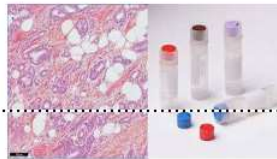
## Collection catalog

ENR-P1-CRB-005 Version 4  
Applicable: 2023-12-24

EURO-QUALITY SYSTEM



Cliquez pour ajouter un sous-titre



For further information, please contact  
[cerbim@chu-martinique.fr](mailto:cerbim@chu-martinique.fr)

☎ 0596 55 35 64

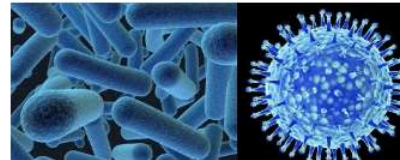
You can visit our website at: <https://www.chu-martinique.fr/recherche/>

## Infectious and emerging diseases

Collection theme	Collection acronym	Promotion	Type of samples
<b>ARBOVIROSES</b> Dengue, Zika, Chikungunya virus infections	ARBHITA	internal	❖ RNA, <u>Cryopreserved cells</u> , Plasma, Capillary blood, Whole blood, Serum ❖ Tears ❖ Saliva, Pharyngeal secretion ❖ Stool, Urine
	CARBO	internal	❖ <u>Cryopreserved cells</u> , Dry cells, Plasma, Serum ❖ Urine
	DENGUE-SEA	internal	❖ Serum
<b>HTLV-1 infections</b>	ATLFAM	internal	❖ <u>Cryopreserved cells</u> , Lymphocyte cells, Serum
	ATLL-HR01	internal	❖ Lymphocyte RNA, <u>Cryopreserved cells</u> , Lymphocyte pellets, Serum
	HAMIL28B	internal	❖ DNA, Plasma, Lymphocyte cells
<b>Papillomavirus and HIV co- infection</b>	HP2V-AG	internal	❖ Nucleic acids, Lymphocyte cells ❖ Cervico-vaginal swabs
<b>Leptospiral infection</b>	LEPTO	internal	❖ Whole blood
	LEPTO3	internal	❖ EDTA plasma

# Infectious and emerging diseases

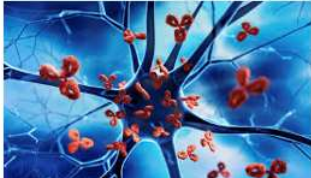
Collection theme	Collection acronym	Promotion	Type of samples
<b>COVID</b>	DISCOVERY / □FRENCH COVID 19 Multicenter, randomized, adaptive study of treatment efficacy and safety in adult patients hospitalized with COVID-19 infection.	external INSERM	<ul style="list-style-type: none"><li>❖ Plasma, Serum, Blood</li><li>❖ BFC</li><li>❖ Lymphocyte clusters</li><li>❖ Respiratory samples</li><li>❖ Urine</li></ul>



## Autoimmune and inflammatory diseases

Themes	Collection name	Promotion	Type of samples
<b>Devic's Neuromyelitis Optica Acute (NOMAD)</b>	CARNOMAD	internal	<ul style="list-style-type: none"> <li>❖ DNA, Lymphocyte pellets, Plasma (plasmapheresis), Serum</li> <li>❖ LCR caps, LCR supernatant</li> </ul>
	TYSABRI	internal	<ul style="list-style-type: none"> <li>❖ DNA, RNA, Lymphocyte cells, Serum</li> </ul>
<b>Multiple sclerosis, Neuromyelitis optica</b>	NEURO-CHUM	internal	<ul style="list-style-type: none"> <li>❖ Whole blood units</li> <li>❖ BFC</li> <li>❖ Plasma (plasmapheresis)</li> <li>❖ Serum, Plasma</li> <li>❖ LCR caps, LCR supernatant</li> </ul>
<b>Rheumatoid arthritis</b>	CAPPPA	internal	<ul style="list-style-type: none"> <li>❖ DNA, Plasma, Blood</li> <li>❖ Urine</li> </ul>
<b>STIM1 membrane expression in autoimmune diseases</b>	STIMEX	external Brest University Hospital	<ul style="list-style-type: none"> <li>❖ Heparinized plasma</li> <li>❖ Cell culture</li> </ul>
<b>Treatment of lupus nephropathy</b>	OBILUP	external APHP Paris	<ul style="list-style-type: none"> <li>❖ Whole blood</li> <li>❖ BFC</li> <li>❖ EDTA plasma</li> <li>❖ Serum</li> <li>❖ Urine</li> <li>❖ Cell culture</li> </ul>

# Autoimmune and inflammatory diseases

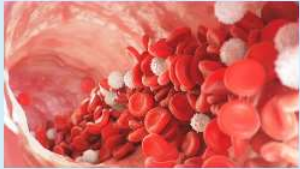
Themes	Collection name	Promotion	Type of samples
<b>Multiple sclerosis</b> 	OFSEP-HD COHORT	<p><b>external</b> promoted by OFSEP (French Multiple Sclerosis Observatory)</p> <p>High-definition (HD) ancillary cohort of multiple sclerosis (MS) patients, enabling more comprehensive collection of potential determinants of observed and interventional disease characteristics, in order to determine prognostic factors for disease progression in real life.</p>	❖ SST II serum
	OFSEP-BIO	<p><b>external</b> promoted by OFSEP (French Multiple Sclerosis Observatory)</p> <p>Collection, for scientific purposes, of biological samples taken from a group of individuals identified and selected on the basis of the clinical or biological characteristics of one or more members of the group, as well as the derivatives of these samples (within the framework of the OFSEP).</p>	<ul style="list-style-type: none"> <li>❖ Whole blood units</li> <li>❖ Cell culture</li> <li>❖ EDTA plasma</li> <li>❖ Serum</li> <li>❖ LCR caps</li> <li>❖ Saliva</li> </ul>

# Cardiometabolic pathologies



Themes	Collection acronym	Promotion	Type of samples
Heart amyloidosis TEAM	TEAM Red Flags	internal	❖ DNA, Whole blood, BFC ❖ Plasma
	TEAM HF	internal	❖ BFC, DNA, ❖ Plasma
👉 AVC	MATISSE The value of molecular analysis of cerebral thrombi in determining the prognosis and etiology of cerebral infarction	external Assistance Publique-Hôpitaux de Marseille	❖ Thrombus ❖ Blood
👉 Bariatric surgery	BARIAMITRI	internal	❖ EDTA plasma ❖ Perigastric fatty tissue



# Genetic diseases

Themes	Collection name	Promotion	Type of samples
<b>Hemostasis abnormalities</b> 	Hemophilias and other deficiencies	internal <b>Private collections</b>	❖ DNA, Plasma, Blood ❖ Urine
	Von <u>Willebrand</u> disease	Collection managers: CRC-MHC Resource and Competence Centre Constitutional Hemorrhagic Diseases	❖ DNA, Plasma, Whole blood

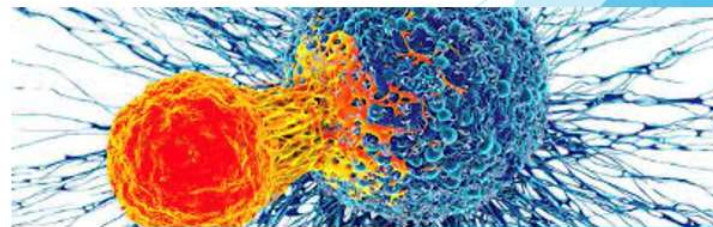
## Cross-cutting themes

Themes	Acronym or collection name	Promotion	Type of samples
<b>Endometrial cancer</b> 	<b>ENDO-NGS</b>	internal	<ul style="list-style-type: none"> <li>❖ DNA, Buffy coat, Cell pellet, Plasma</li> <li>❖ <b>Fabric</b></li> </ul>
<b>Cancer and COVID 19</b>	<b>RESILIENCE</b>	internal	<ul style="list-style-type: none"> <li>❖ Serum</li> </ul>
<b>Unexpected Infant Death Syndrome</b> Generate and update prevention messages for the general public and healthcare professionals, improve care for families and deceased children, and advance scientific research.	 <b>BIOMIN</b>	external OMIN (Observatoire national des Morts Inattendues du Nourrisson - CHU de Nantes)	<ul style="list-style-type: none"> <li>❖ Blood, blood PAXgene</li> <li>❖ <b>Guthrie cardboard</b></li> <li>❖ Serum, CSF</li> <li>❖ Urine, stool</li> <li>❖ Respiratory samples</li> <li>❖ Hair</li> <li>❖ Plasma, Cell culture</li> </ul>
<b>Environmental</b> Health, nutrition and exposure to <b>chlordecone</b> in the West Indies. Population study of food consumption in the West Indies and <b>chlordecone</b> impregnation.	<b>KANNARI 1</b>	external ARS	<ul style="list-style-type: none"> <li>❖ Whole blood</li> <li>❖ Serum</li> <li>❖ Urine</li> <li>❖ Hair</li> </ul>
<input type="checkbox"/> <b>Environnementale</b> Study of the impregnation of the Martinique and Guadeloupe populations by the <b>chlordecone</b> molecule and other environmental pollutants of interest	<b>KANNARI 2</b>	external Santé Publique France	<ul style="list-style-type: none"> <li>❖ Blood</li> <li>❖ Serum</li> <li>❖ Urine</li> </ul>



## Cross-cutting themes: Oncology

Themes		Type of samples
<b>Perinatal (Fetopathology)</b>	CeRBIM	❖ Fabric, DNA
<b>Hematology</b>	CeRBIM	❖ Tumor tissue
<b>Digestive tumors</b>	CeRBIM	❖ Healthy and tumor tissue
<b>Urology / Gynecology</b>	CeRBIM	❖ Healthy and tumor tissue
<b>Neurosurgery / ENT</b>	CeRBIM	❖ Healthy and tumor tissue
<b>Cardiovascular and thoracic</b>	CeRBIM	❖ Healthy and tumor tissue
<b>Pediatric pathologies</b>	CeRBIM	❖ Healthy and tumor tissue
<b>Dermatology</b>	CeRBIM	❖ Healthy and tumor tissue



## Tumor bank left over from treatment

The health mission of tumor banks is an integral part of the cancer treatment authorization system for healthcare establishments.

	Objectives	nature
<b>ANAPATH</b>	<p>Preserve biological samples as part of a patient's medical file, guaranteeing that doctors can return to these biological archives to refine a diagnosis or therapeutic orientation.</p> <p>Cryopreservation must be guaranteed in cases where it proves to be a <u>prerequisite</u> for carrying out molecular tests to improve the diagnostic and therapeutic management of patients.</p>	<p>❖ Healthy and tumor tissue</p>



## They trust us....

### ▶ **Université des Antilles Doctoral schools**

- Thesis Laurie-Anne ROSAMONT (Neurology)
- Thesis Marie-Daniéla DUBOIS (Hematology)

### ▶ **INSERM**

- MADIPROSTATE
- SAPOTILLE
- FRENCH COVID-19
- FRENCH COVID 2021
- EPICOV
- EPICOV4
- COCOPREV

### ▶ **CHU**

- Nantes : POLYCOR
- APHP Paris: TEMO-CARB

### ▶ **MSD Laboratory**

- MOVE-AHEAD

### ▶ **Theradis Pharma**

- DISCOVERY-2

### ▶ **Vaccine Research Center**

- VRC 704

### ▶ **ADD MEDICA Laboratory**

- SIKAMIC

# Publications over the last ten years



- **2014** *Infectious and tropical diseases in the Caribbean*
- **2014** *Journées Nationales Infectiologie*, André CABIE
- **2016** Epidemiology of aquaporin-4 autoimmunity and neuromyelitis optica spectrum, Flanagan et al, *Annals of Neurology*
- **2017** Guillain-Barre Syndrome Associated With Zika Virus Infection in Martinique in 2016: A Prospective Study, Benoît Rozé et al, *Clinical Infectious Diseases*
- **2018** Préambule du mémoire Etude Génétique de l'Hémophilie A en Martinique, DUBOIS Marie-Daniéla CRC MHC
- **2018** Zika virus infects human testicular tissue and germ cells, Giulia Matusali et al, *Journal of Clinical Investigation*
- **2020** Common core methods for the four components of the KANNARI study on health, nutrition and exposure to chlordecone in the West Indies 2011-2018, *Santé Publique France*
- **2020** Prevalence of chronic chikungunya and associated risks factors in the French West Indies (La Martinique): A prospective cohort, Bertolotti et al, *PLoS Neglected Tropical Diseases*
- **2020** Zika Virus infection promotes local inflammation, cell adhesion molecule upregulation, and leukocyte recruitment at the blood-brain barrier, Marion Clé et al., *Host-Microbe Biology*
- **2021** Remdesivir plus standard of care versus standard of care alone for the treatment of patients admitted to hospital with COVID-19 (DisCoVeRy): a phase 3, randomised, controlled, open-label trial, Florence Ader et al, *The Lancet*
- **2021** Nasopharyngeal and serological anti SARS-CoV-2 IgG/IgA responses in COVID-19 patients. Crescenzo-Chaigne B et al, *Journal of Clinical Virology more*
- **2022** Remdesivir for the treatment of hospitalised patients with COVID-19: final results from the DisCoVeRy randomised, controlled, open-label trial. Ader et al, *MedRxiv*
- **2022** Trends in social exposure to SARS-Cov-2 inFrance. Evidence from the national socioepidemiological cohort-EPICOV. Josiane Warszawski ... Epicov Team. *PlosOne*¶
- **2022** EPICOV presentation at the 3-CR conference (slide thanking CeRBiM)
- **2023** ENDO - NGS: 1 manuscript awaiting validation
- **2023** ENDO - NGS: 1 manuscript in progress