



Biological Resource Center of Martinique (CeRBiM)

Collection catalog

ENR-P1-CRB-005 Version 3
Applicable 2023-06-12



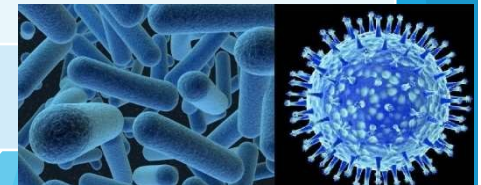
For further information: cerbim@chu-martinique.fr

You can visit our website at: <https://www.chu-martinique.fr/recherche/>

☎ 0596 55 35 64

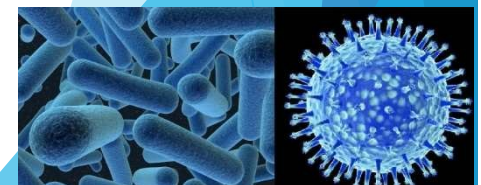
Infectious and emerging diseases

Collection theme	Collection acronym	Promotion	Type of samples
ARBOVIROSES Dengue, Zika, Chikungunya virus infections	ARBHITA	internal	<ul style="list-style-type: none"> ❖ RNA, Cells cryopreserved, Plasma, Capillary Blood, Whole Blood and Serum ❖ Tears, ❖ Saliva, Pharyngeal secretion ❖ Stool, Urine
	CARBO	internal	<ul style="list-style-type: none"> ❖ Cells cryopreserved, Cells dry, Plasma, Serum ❖ Urine
	DENGUE SEA	internal	<ul style="list-style-type: none"> ❖ Serum
HTLV-1 infections	ATLFAM	internal	<ul style="list-style-type: none"> ❖ Cryopreserved cells, Lymphocyte cells, Serum
	ATL-HR01	internal	<ul style="list-style-type: none"> ❖ Lymphocyte RNA, Cryopreserved cells, Lymphocyte pellets, Serum
	HAMIL28B	internal	<ul style="list-style-type: none"> ❖ DNA, Plasma, Lymphocyte cells
Papillomavirus and HIV co- infection	HP2V-AG	internal	<ul style="list-style-type: none"> ❖ Nucleic acids, Lymphocyte cells ❖ Cervico-vaginal swabs
Leptospiral infection	LEPTO	internal	<ul style="list-style-type: none"> ❖ Whole blood
	LEPTO3	internal	<ul style="list-style-type: none"> ❖ EDTA plasma



Infectious and emerging diseases

Collection theme	Collection acronym	Promotion	Type of samples
COVID	<u>DISCOVERY</u> Multicenter, randomized, adaptive study of treatment efficacy and safety in adult patients hospitalized with COVID-19 infection.	External: INSERM	



Autoimmune and inflammatory diseases

Themes	Collection name	Internal	Type of samples
Devic's Neuromyelitis Optica Acute (NOMAD)	CARNOMAD	promotio	<ul style="list-style-type: none"> ❖ DNA, Lymphocyte pellets, Plasma (plasmapheresis), Serum ❖ LCR caps, LCR supernatant
	TYSABRI	n	<ul style="list-style-type: none"> ❖ DNA, RNA, Lymphocyte cells, Serum
Multiple sclerosis, Neuromyelitis optica	NEURO-CHUM	internal	<ul style="list-style-type: none"> ❖ Lymphocyte pellets, Plasma (plasmapheresis), Serum ❖ LCR caps, LCR supernatant
	ACPPPA	internal	<ul style="list-style-type: none"> ❖ DNA, Plasmas, Blood ❖ Urine
Multiple sclerosis	<u>OFSEP-HD COHORT</u>	<p>internal</p> <p>external</p> <p>promoted by OFSEP (Observatoire Français de la Sclérose En Plaques - French Multiple Sclerosis Observatory) To collect, in a more comprehensive way, the potential determinants of observed and interventional features of the disease, in order to determine prognostic factors for the evolution of the disease in real life. This cohort is based on a subgroup of well-defined patients within the OFSEP network, from selected centers.</p>	

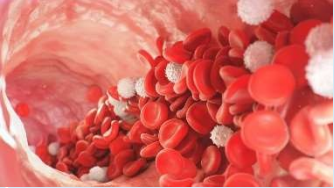


Cardiometabolic pathologies

Themes	Collection acronym	Promotion	Type of samples
Cardiac amyloidosis TEAM	TEAM Red Flags	internal	❖ DNA, Whole blood ❖ Plasma
	TEAM HF	internal	
AVC	<u>MATISSE:</u> The value of molecular analysis of cerebral thrombi in determining the prognosis and etiology of cerebral infarction	external Assistance Publique-Hôpitaux de Marseille	



Genetic diseases

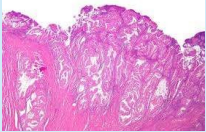



Collection manager	Collection theme	Promotion	Collection name	Type of samples
CRC-MHC Resource and Competence Centre - Constitutional Hemorrhagic Diseases (private collection)	Hemostasis abnormalities 	internal	Hemophilias and other deficiencies	❖ DNA, Plasmas, Blood ❖ Urine
			Von Willebrand disease	❖ DNA, Plasma, Whole blood
ADDMEDICA SA in the process of closing	Randomized, double-blind, placebo-controlled, multicenter study to evaluate the effect on albumin of hydroxycarbamide (Siklos®) or placebo treatment in adult patients with sickle cell disease.	external	SIKAMIC	

Cross-cutting themes: **Oncology**

Themes		Type of samples
Perinatal (Fetopathology)	CeRBIM	❖ Fabric, DNA
Hematology	CeRBIM	❖ Tumor tissue
Digestive tumors	CeRBIM	❖ Healthy and tumor tissue
Urology / Gynecology	CeRBIM	❖ Healthy and tumor tissue
Neurosurgery / ENT	CeRBIM	❖ Healthy and tumor tissue
Cardiovascular and thoracic	CeRBIM	❖ Healthy and tumor tissue
Pediatric pathologies	CeRBIM	❖ Healthy and tumor tissue
Dermatology	CeRBIM	❖ Healthy and tumor tissue



Cross-cutting themes

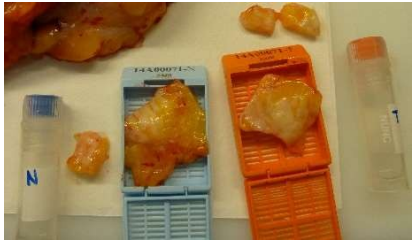
Themes	Acronym or collection name	Promotion	Type of samples
Endometrial cancer 	ENDO-NGS	internal	<ul style="list-style-type: none"> ❖ DNA, buffy coat platelet, Culot cellular, Plasma ❖ Fabric
Cancer and COVID 19	RESILIENCE	internal	☐ Serum
Perinatal Generate and update prevention messages for the general public and healthcare professionals, improve care for families and deceased children, and advance scientific research.	BIOMIN	external I OMIN (Observatoire national des Morts Inattendues du Nourrisson - CHU de Nantes)	
Environmental Health, nutrition and exposure to chlordecone in the West Indies. Population study of food consumption in the West Indies and chlordecone impregnation.	KANNARI	external ARS	
Environmental Assessing the role of environmental and occupational exposure to pesticides. Study pilot case-control in Guadeloupe and Martinique. Control patients (healthy) and patients with myeloma or lymphoma	MYELODOM	external CHU de la Guadeloupe	

Tumorotheque Sanitaire

The "health" mission of tumor banks is an integral part of the authorization system for healthcare establishments providing cancer treatment.

	Objectives	nature
Sanitary ANAPATH	<p>Preserving the samples biological samples as a part of file medical file of patient, guaranteeing to physicians the possibility of revisiting these biological archives in order to clarify diagnosis or therapeutic guidance. Cryopreservation must be guaranteed in the event that it proves necessary. be a prerequisite for molecular testing enabling improve the intake in care diagnostic and patient therapy.</p>	<p>❖ Healthy and tumor tissue</p>





They trust us....

- **Theradis pharma** :

- DISCOVERY-2

- **INSERM:**

- FRENCH COVID-19
- FRENCH COVID 2021
- EPICOV
- EPICOV4
- COCOPREV

- **MSD Laboratory**

- MOVE-AHEAD



Publications over the last ten years

- **2014** *Infectious and tropical diseases in the Caribbean*
- **2014** *Journées Nationales Infectiologie*, André CABIE
- **2016** Epidemiology of aquaporin-4 autoimmunity and neuromyelitis optica spectrum, Flanagan et al, *Annals of Neurology*
- **2017** Guillain-Barre Syndrome Associated With Zika Virus Infection in Martinique in 2016: A Prospective Study, Benoît Rozé et al., *Clinical Infectious Diseases*
- **2018** Préambule du mémoire Etude Génétique de l'Hémophilie A en Martinique, DUBOIS Marie-Daniéla CRC MHC
- **2018** Zika virus infects human testicular tissue and germ cells, Giulia Matusali et al, *Journal of Clinical Investigation*
- **2020** Common core methods for the four components of the KANNARI study on health, nutrition and exposure to chlordecone in the West Indies 2011-2018, *Santé Publique France*
- **2020** Prevalence of chronic chikungunya and associated risks factors in the French West Indies (La Martinique): A prospective cohort, Bertolotti et al, *PLoS Neglected Tropical Diseases*
- **2020** Zika Virus infection promotes local inflammation, cell adhesion molecule upregulation, and leukocyte recruitment at the blood-brain barrier, Marion Clé et al., *Host-Microbe Biology*
- **2021** Remdesivir plus standard of care versus standard of care alone for the treatment of patients admitted to hospital with COVID-19 (DisCoVeRy): a phase 3, randomised, controlled, open-label trial, Florence Ader et al, *The Lancet*
- **2021** Nasopharyngeal and serological anti SARS-CoV-2 IgG/IgA responses in COVID-19 patients. Crescenzo-Chaigne B et al., *Journal of Clinical Virology more*
- **2022 03** Remdesivir for the treatment of hospitalised patients with COVID-19: final results from the [DisCoVeRy](#) randomised, controlled, open-label trial. Ader et al, *MedRxiv*
- **2022 05** Trends in social exposure to SARS-Cov-2 in France. Evidence from the national socioepidemiological [cohort-EPICOV](#). Josiane Warszawski ...Epicov Team. *PlosOne*¶
- **2022 06** [EPICOV](#) presentation at 3-CR days (Thank you slide to CeRBiM)